

Should I let my children swear?

Introduction (What?)

- Background on swearing
- Motivation (why is swearing bad?)
- Model

$$A = \begin{pmatrix} \text{---} & \text{---} \\ \text{---} & \text{---} \end{pmatrix}$$

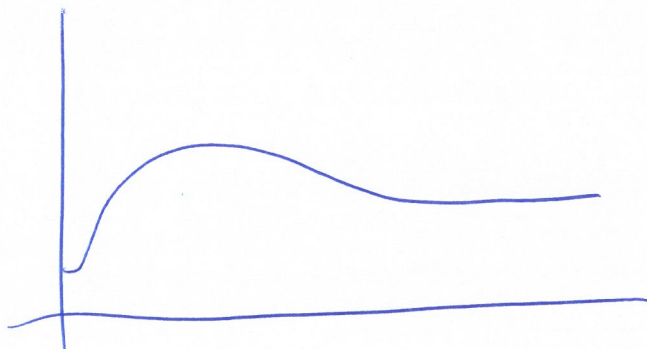
pairwise interaction
between children

- Gt to establish social norms

$$\dot{x} = \dots$$

Model (Method (how?))

- Nash equilibria
- Stability
- numerical integration of R.d



Further Analysis/Results (so what?)

- Change parameters
- Graph



Conclusion (Why? Now what?)

- Review
- show off
- anything else
- Future work

References

⋮